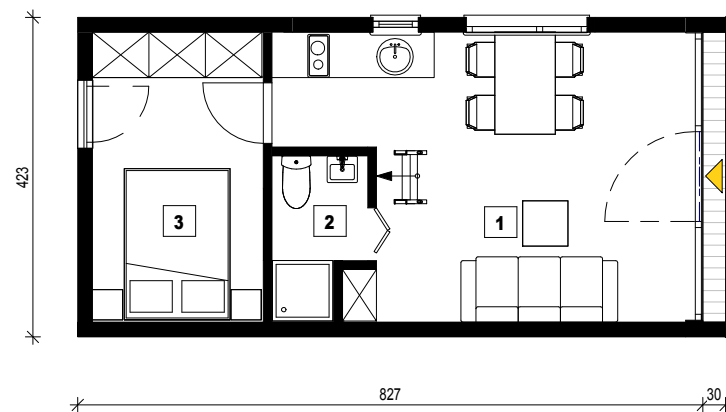
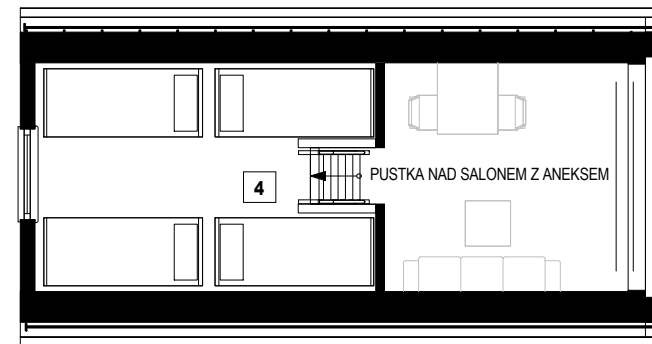


**POWIERZCHNIA UŻYTKOWA**  
34.28 m<sup>2</sup>



PARTER		
1	SALON Z ANEKSEM	18.10 m <sup>2</sup>
2	ŁAZIENKA	2.42 m <sup>2</sup>
3	POKÓJ	8.67 m <sup>2</sup>
		29.19 m <sup>2</sup>



PODDASZE		
4	ANTRESOLA	5.09 m <sup>2</sup>

