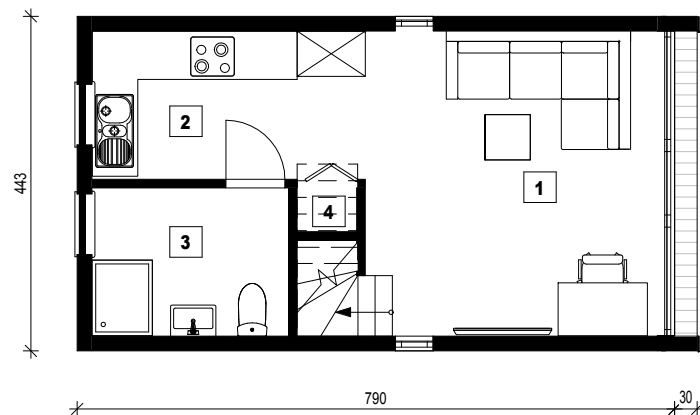
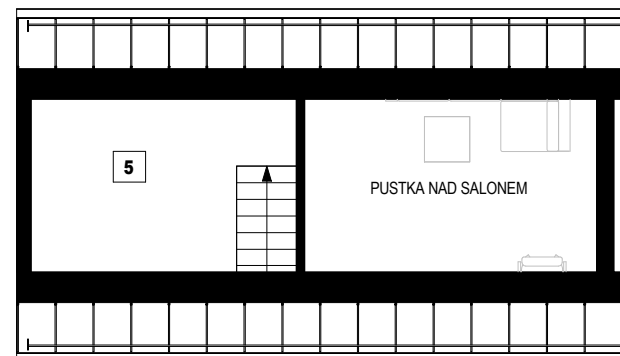


POWIERZCHNIA UŻYTKOWA
34.13 m²



PARTER

1	SALON	18.46 m ²
2	KUCHNIA	5.31 m ²
3	ŁAZIENKA	5.10 m ²
4	SCHOWEK	0.46 m ²
		29.31 m ²



PODDASZE

5	ANTRESOLA	4.81 m ²
---	-----------	---------------------

