

D695_45

Ground floor area: 69m²

Attic area: 36m²

Total area: 105m²



D695_45

Third basic module for a 69m² house. The module offers an enlarged daytime zone at the expense of two bedrooms. It can be configured with additional modules in the same way as previous houses.

01.hallway 2.3m²/ **02.**corridor 3.5m²/ **03.**Cloakroom 2m²/ **04.**bathroom/laundry room/
boiler room 2.9m²/ **05.**kitchen 9.7m²/ **06.**dining room and living room 46m²/ **07.**loggia
5m²/ **08.**Stairs 2.1m²/ **09.**corridor 4.5m²/ **10.**Single bedroom 14m²/ **11.**Toilet 1.6m²/
12.Bathroom 3.2m²/ **13.**double bedroom 17m²/ **14.**single bedroom 7.3m²

D693_45-G02_1

powierzchnia parteru: 69m²

powierzchnia poddasza: 47,6m²

powierzchnia łącznie: 116,6m²

powierzchnia garażu ze składzikiem: 26,2m²



D693_45-G02_1

This basic module includes a garage which is situated behind the gable wall. In the garage there is a space for a laundry room, boiler room or utility room. The entrance and loggia are finished with wood panels.

01.hallway 2.3m²/ **02.**corridor 4.9m²/ **03.**cloakroom 2.2m²/ **04.**bathroom/laundry room/boiler room 2.9m²/ **05.**Kitchen 9.7m²/ **06.**dining room/living room 20.6m²/ **07.**Loggia 5m²/ **08.**Double bedroom 9.7m²/ **09.**Bathroom 3.3m²/ **10.**Single bedroom 9.1m²/ **11.**Stairs 3m²/ **12.**garden storage 2.4m²/ **13.**garage 23.8m²/ **14.**corridor 4.5m²/ **15.**single bedroom 14m²/ **16.**Toilet 1.6m²/ **17.**Bathroom 3.2m²/ **18.**Double bedroom 17m²/ **19.**single bedroom 7.3m²

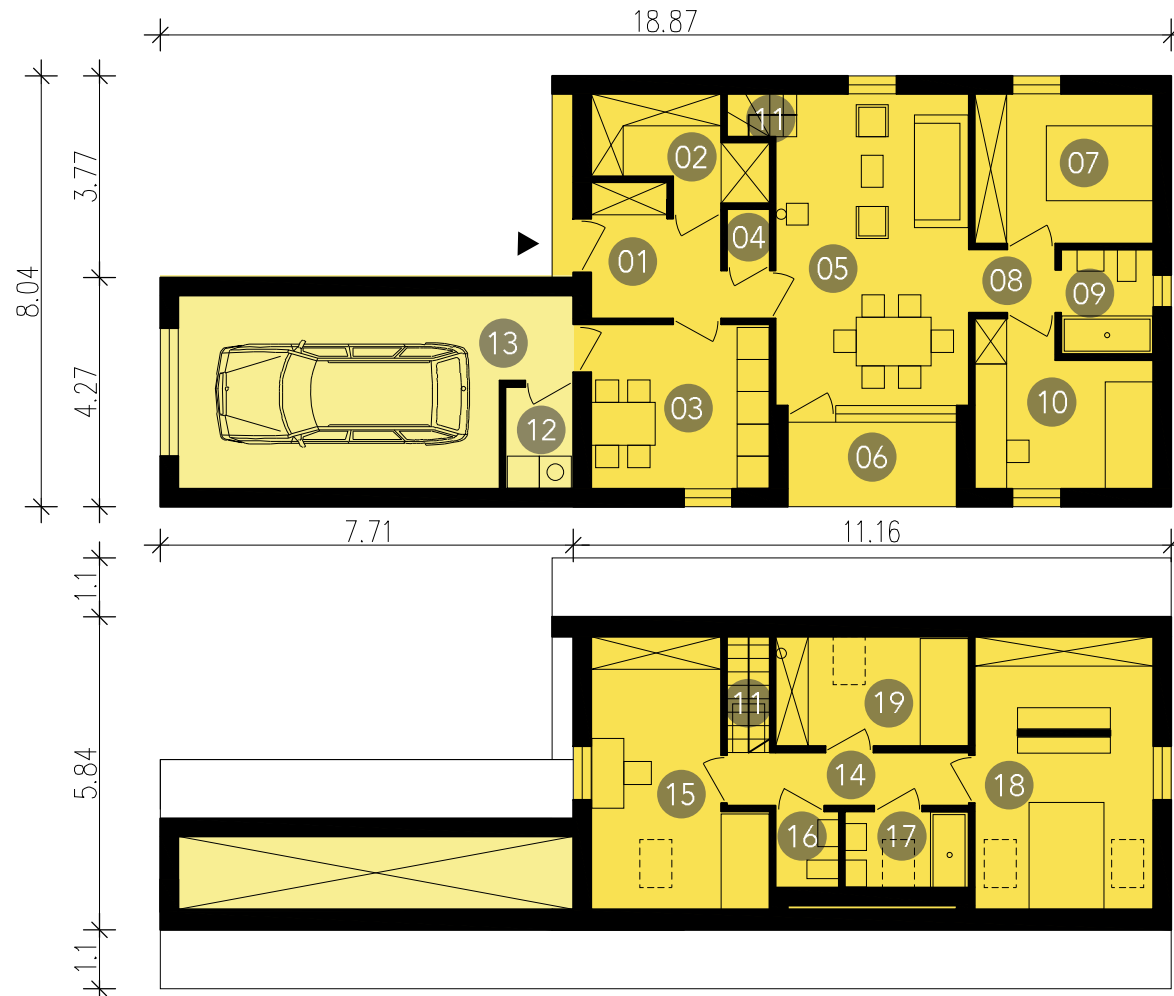
D693_45-G01_1

powierzchnia parteru: 69m²

powierzchnia poddasza: 47,6m²

powierzchnia łącznie: 116,6m²

powierzchnia garażu ze składzikiem: 26,2m²



D693_45-G01_1

This basic module is enlarged by a parallel garage connected to the living part through the hall. The garage is directly connected to the kitchen, to make the way from car and refrigerator more convenient. The garage has space for laundry and boiler room or utility room. The top panel of the base module is finished with a wooden façade

01.hallway 6.3m²/ 02.cloakroom 4.4m²/ 03.kitchen 10.2m²/ 04.Room 0.9m²/ 05.dining and living room 20.6m²/ 06.loggia 5m²/ 07.double bedroom 9.3m²/ 08.Bathroom 3.3m²/ 09.Corridor 1.9m²/ 10.Single bedroom 9.1m²/ 11.Stairs 3m²/ 12.laundry room/ boiler room 2.4m²/ 13.garage 23.8m²/ 14.corridor 4.5m²/ 15.single bedroom 14m²/ 16.Toilet 1.6m²/ 17.Bathroom 3.2m²/ 18.Double bedroom 17m²/ 19.single bedroom 7.3m²

D693_45-Z01-A02

powierzchnia parteru: 69m²

powierzchnia poddasza: 47,6m²

powierzchnia łącznie: 116,6m²

powierzchnia garażu ze składzikiem: 26,2m²



D693_45-Z01-A02

The basic module is supplemented by a covered driveway that can serve as an external room and provides additional storage space. There is a room that can serve as an office a toilet and a kitchen annex next to the carport.

01.hallway 2.3m²/ **02.**corridor 4.9/ **03.**cloakroom 2m²/ **04.**bathroom/laundry room/boiler room 2.9m²/ **05.**kitchen 9.7m²/ **06.**dining room and living room 20.6m²/ **07.**loggia 5m²/ **08.**double bedroom 9.7m²/ **09.**Bathroom 3.3m²/ **10.**Single bedroom 9.1m²/ **11.**Stairs 3m²/ **12.**carport 30.3m²/ **13.**kitchen 2.1m²/ **14.**toilet 1.8m²/ **15.**dining room/living room 23.3m²/ **16.**corridor 4.5m²/ **17.**single bedroom 14m²/ **18.**toilet 1.6m²/ **19.**bathroom 3.2m²/ **20.**double bedroom 17m²/ **21.**Single bedroom 7.3m²

D693_45-Z01-G03

powierzchnia parteru: 69m²

powierzchnia poddasza: 47,6m²

powierzchnia łącznie: 116,6m²

powierzchnia garażu ze składzikiem: 27,8m²



D693_45-Z01-G03

The above basic module is supplemented by a covered driveway that can serve as an external room and gives additional storage space. There is a storage room for gardening tools in the garage.

01.hallway 2.3m²/ 02.corridor 4.9/ 03.cloakroom 2.2m²/ 04.bathroom/laundry room/ boiler room2.9m²/ 05.kitchen 9.7m²/ 06.dining room and living room 20.6m²/ 07.loggia 5m²/ 08.double bedroom 9.7m²/ 09.Bathroom 3.3m²/ 10.Single bedroom 9.1m²/ 11.Stairs 3m²/ 12.carport 30.3m²/ 13.garage 23.8m²/ 14.garden storage 2.4m²/ 15.corridor 4.5m²/ 16.single bedroom 14m²/ 17.toilet 1.6m²/ 18.bathroom 3.2m²/ 19.double bedroom 17m²/ 20.single bedroom 7.3m²

D693_45

powierzchnia parteru: 69m²

powierzchnia poddasza: 36m²

powierzchnia łącznie: 105m²



D693_45

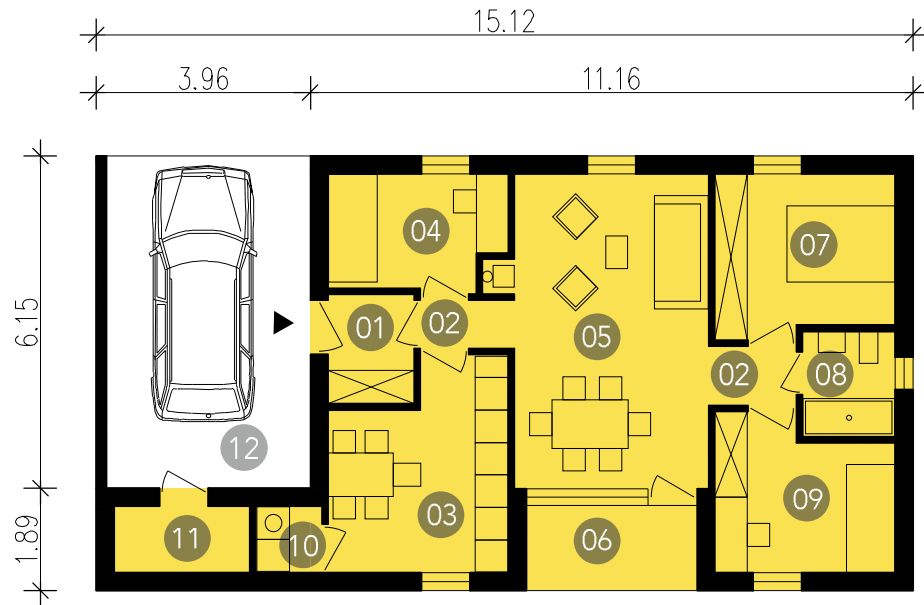
This is a perfect solution for a larger family, because this module can have up to five bedrooms. Homeowners can have at their disposal two bathrooms and two toilets. There is a place for a table which can sit 6-8 people at daily basis. The kitchen offers a place to eat breakfast for 5-6 people, from which you can see the gate and the entrance to the plot. On warm days dinner can be served in loggia, which can be extended by an outside terrace. An average sized house with a loft has 116 m² of living space.

01.hallway 2.3m²/ 02.corridor 4.9/ 03.room 0.9m²/ 04.cloakroom 2.2m²/ 05.bathroom/ laundry room/boiler room 2.9m²/ 06.kitchen 9.7m²/ 07.dining room and living room 20.6m²/ 08.loggia 5m²/ 09.double bedroom 9.9m²/ 10.Bathroom 3.3m²/ 11.Single bedroom 9m²/ 12.Stairs 2.1/ 13.corridor 4.5m²/ 14.Single bedroom 14m²/ 15.Toilet 1.6m²/ 16.bathroom 3.2m²/ 17.double bedroom 17m²/ 18.single bedroom 7.3m²

D692_15



D692_30

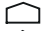



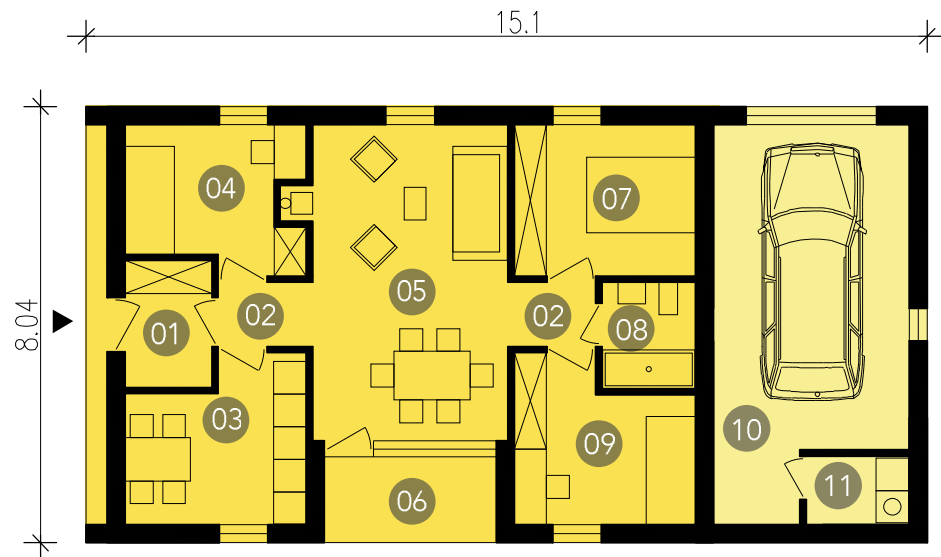
D692_15

D692_30

Medium sized house with a simple solution of parking and storage in one place. The basic module is complemented with a carport which can serve as a parking space, a hammock resting area under the roof, and an ideal place to store sports equipment on the ceiling beams. In addition, it includes a spacious storage room and laundry/ boiler room which are connected to the kitchen.

01.hallway 3.2m²/ 02.corridor 3.2m²/ 03.kitchen 11.6m²/ 04.single bedroom 6.8m²/ 05.dining room and living room 21.3/ 06.loggia 5m²/ 07.double bedroom 9.7m²/ 08.Bathroom 3.3m²/ 09.3 bed bedroom 8.9m²/ 10.Laundry room/boiler room 1.4m²/ 11.garden storage 3m²/ 12.Garage 23.1m²



D691_15-G02_1 
D691_30-G02_1 

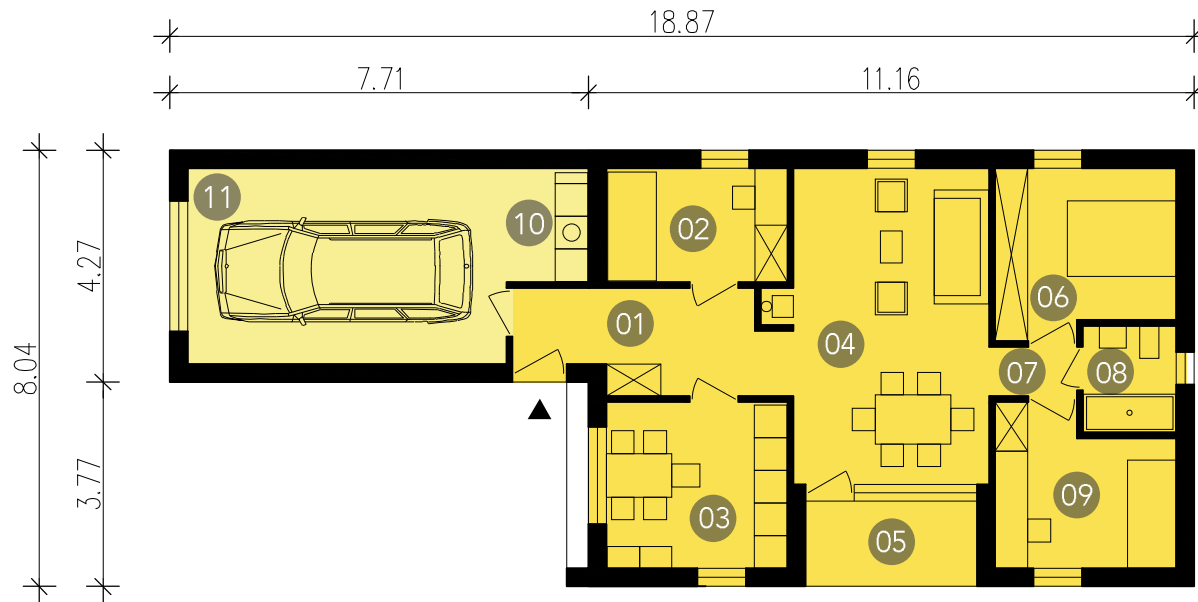


D691_15-G02_1
D691_30-G02_1

This module is a perfect solution for corner plots. The garage is attached perpendicularly to the house. The garage is situated behind the gable wall. In the garage there is a space for the boiler room and for a pantry. He entrance door and loggia are finished with wood decking.

01.hallway 3.7m²/ 02.corridor 3.3m²/ 03.kitchen 9.3m²/ 04.Single bedroom 8.1m²/ 05.dining room and living room 21.3m²/ 06.loggia 5m²/ 07.double bedroom 9.3m²/ 08.bathroom 3.3m²/ 09.3 bed bedroom 8m²/ 10.garage 23.1m²/ 11.Laundry room/boiler room 2.4m²/


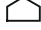
D691_15-G01_2 
D691_30-G01_2 

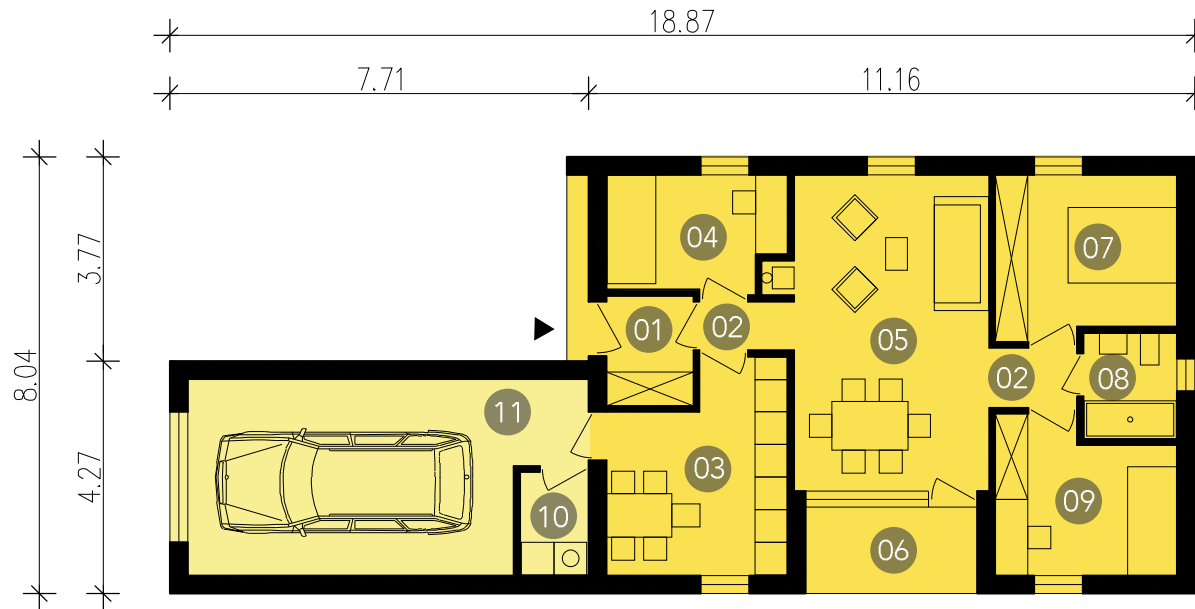


D691_15-G01_2
D691_30-G01_2

This basic module is enlarged by a parallel garage connected to the living part through the lobby. In the garage there is a laundry room and a boiler room. The smallest room next to the lobby can serve as a home office or cloakroom. The wall at the entrance to the building is covered with a wooden decking.

01.hallway 9m²/ **02.**single bedroom 7m²/ **03.**kitchen 10.2m²/ **04.**dining room and living room 21.4m²/ **05.**loggia 5m²/ **06.**double bedroom 9.9m²/ **07.**Corridor 1.4m²/ **08.**bathroom 3.3m²/ **09.**3 bed bedroom 9m²/ **10.**Laundry room/boiler room 1.3m²/ **11.**garage 23.1m²/



D691_15-G01_1 
D691_30-G01_1 

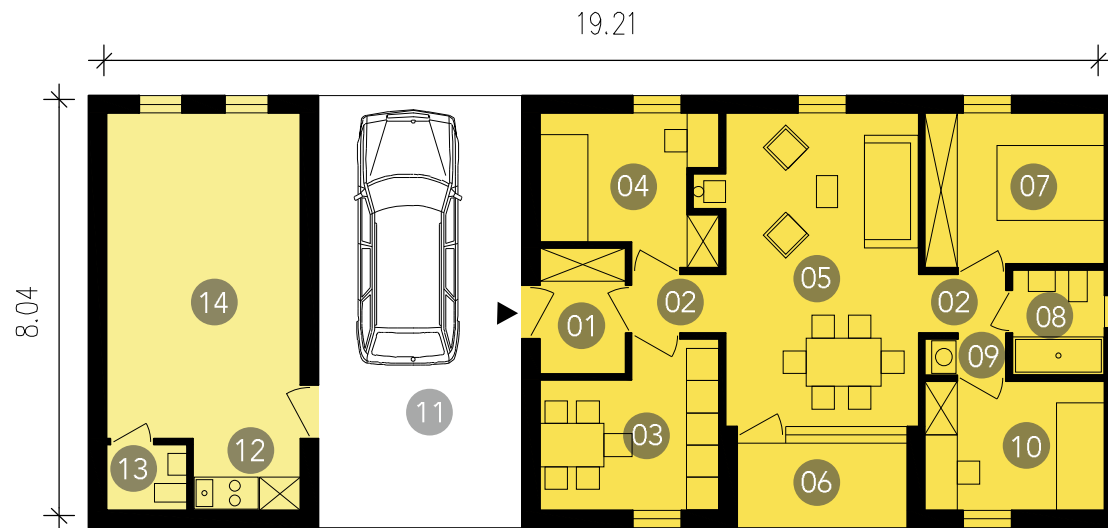


D691_15-G01_1 D691_30-G01_1

This basic module is enlarged by a parallel garage connected to the living part through the hall. The garage is connected to the house through the kitchen to shorten the way of carrying shopping from the car to the fridge. In the garage there is a space for laundry and boiler room and for a pantry. Next to the hallway there is a small room that can serve as a home office. The top panel of the basic module is finished with wood decking.

01.hallway 3.2m²/ **02.**corridor 3.3m²/ **03.**kitchen 11.7m²/ **04.**single bedroom 6.7m²/ **05.**Dining room and living room 21.3m²/ **06.**loggia 5m²/ **07.** double bedroom 9.7m²/ **08.**Bathroom 3.3m²/ **09.**3 bed bedroom 8.9m²/ **10.**Laundry room/boiler room 1.3m²/ **11.**garage 23.1m²/

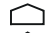
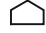
D691_15-Z01-A02 
D691_30-Z01-A02 

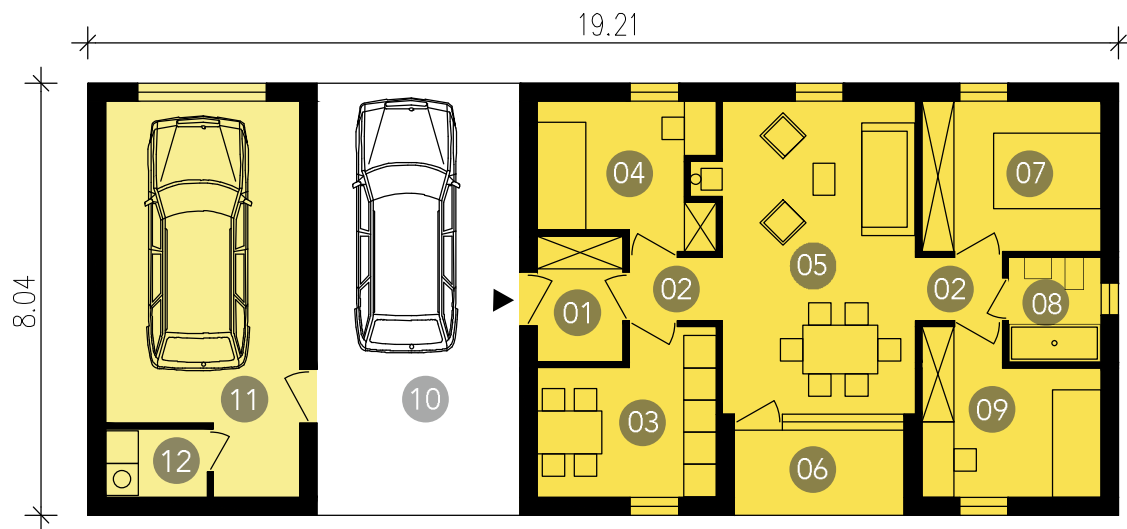


D691_15-Z01-A02 D691_30-Z01-A02

Basic module supplemented by an external carport and a studio with a kitchen annex and a toilet. The carport is especially useful on hot days because you can hang hammocks there. It also serves as a parking space and storage space. There is a possibility to have an open ceiling in the garage allowing for increased storage space. Loggia is finished with wood decking.

01.hallway 3.7m²/ **02.**corridor 3.9m²/ **03.**kitchen 9.3m²/ **04.**single bedroom 8.1m²/ **05.**Dining room and living room 21.3m²/ **06.**loggia 5m²/ **07.**double bedroom 9.5m²/ **08.**Bathroom 3.3m²/ **09.**Laundry room/boiler room 1.1m²/ **10.**3 bed bedroom 8m²/ **11.**carport 30.3m²/ **12.**Kitchen 2.1m²/ **13.**bathroom 1.8m²/ **14.**Dining room/living room 23.2m²



D691_15-Z01 -G03 
D691_30-Z01 -G03 

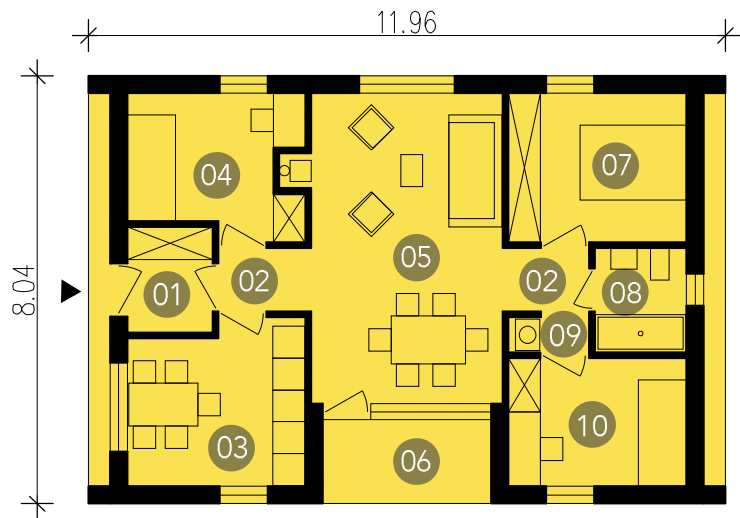


D691_15-Z01 -G03 D691_30-Z01 -G03

This is a basic module featuring a carport and external garage with laundry room/boiler room. The carport can function as an external room that is especially useful on hot days. It can serve as a parking space and additional storage space. Open beam construction can be used to hang hammocks. Loggia is finished with wood panels.

01.hallway 3.1m²/ **02.**corridor 3.9m²/ **03.**kitchen 9.3m²/ **04.**single bedroom 8.1m²/
05.Dining room and living room 21.3m²/ **06.**loggia 5m²/ **07.**double bedroom 9.3m²/
08.Bathroom 3.3m²/ **09.**3 bed bedroom 8m²/ **10.**carport 30.3m²/ **11.**garage 23.9m²/
12.laundry room/boiler room 2.4m²

D691_15 
D691_30 



D691_15
D691_30

Medium sized family home for 2 + 2 family. It features three bedrooms and a well set and lit kitchen. The daytime zone is divided into living room with fireplace or stove and a place for a table for up to 8 people. Additionally is has a centrally located loggia which gives a possibility to To be extended into a terrace. Front elevation, rear elevation and loggia are finished with wood panels. There is a possibility to enlarge the daytime zone and give it a lofty effect by exposing the ceiling.

01.hallway 3.1m²/ **02.**corridor 3.9m²/ **03.**kitchen 3.9m²/ **04.**single bedroom 8.1m²/ **05.**Dining room and living room 21.3m²/ **06.**loggia 5m²/ **07.**double bedroom 9.3m²/ **08.**Bathroom 3.3m²/ **09.**laundry room/boiler room 1.1m²/ **10.** people bedroom 8m²/