

D923_45-Z02-A02



Ground floor surface: 92m²

Attic surface: 33.7 + 9m² = 42.7m²

Total surface: 134.7m²

Garage and storage surface: 25.6m²

28,89

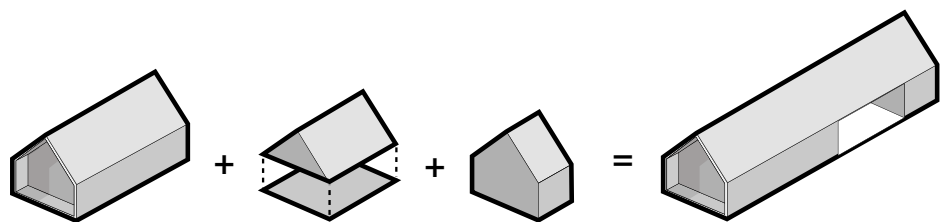


This is a comfortable house ideal for multi-generations families. The house is equipped with three bathrooms, laundry-boiler room and cloak room. On the ground floor there is also a guest room which can serves as a study. Dining room may host up to 12 people. There is a carport for 2 cars under which the entry to the house and the studio is located. Entering the building and garage through the carport protects against rain and provides an extra space for storage. The wall from the terrace side is finished with wood panels.

Minimum plot dimensions: 16mx34.5m (unless otherwise advised by zoning development planning or planning permission for a given plot)

01.hallway 5.2m²/ 02.laundry room/ boiler room 2m²/ 03.bathroom 3.7m²/ 04.corridor 7.1m²/ 05.double bedroom 15.6m²/ 06.kitchen 10.1m²/ 07.Dining room and living room 34m²/ 08.Terrace 18m²/ 09.Stairs 4.2m²/ 10.corridor 5.4m²/ 11.single bedroom 11.8m²/ 12.single bedroom 13m² m²/ 13.bathroom 3.1m²/ 14.double bedroom 13.7m² 15.cloakroom/ 16.Bathroom 3.7m²/ 17.single bedroom 8.5m²/ 18.carport 47.5m²/ 19.kitchen 1.4m²/ 20.dining room and living room 22.6m²/ 21.Toilet 1.5m²

Konfiguracja 8 : D923_45-Z02-A02



D923_45-Z02-A02

D921_15-Z02-A02
D921_30-Z02-A02
D921_45-Z02-A02



29,08



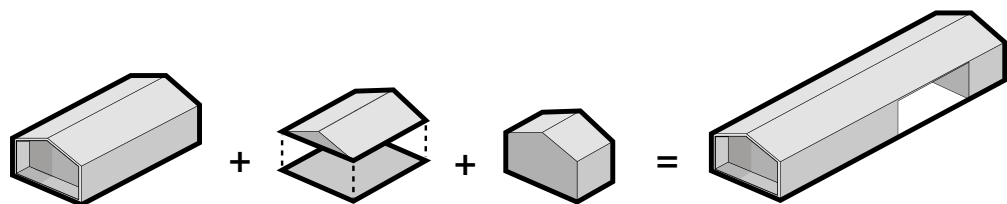
This is a house which provides optimum comfort for its residents. The house is ideal for a couple with two children. The house is equipped with separate bathroom, laundry and boiler room and an additional bathroom. The extended living room and dining room allow for having over a group of up to 10 people. Perpendicular to the entrance there is a carport for two cars, under which the entrance to the house and to a studio is located. Entering the building and the garage through the carport protects you from the rain and gives you extra storage space. The facade from the terrace side is finished with wooden panels.

01.hallway 5.7m²/ 02.laundry room/ boiler room 2m²/ 03.bathroom 3.3m²/ 04.corridor 7.1m²/ 05.single bedroom 8.2 m²/ 06.Single bedroom 8.2m²/ 07.kitchen 9.1m²/ 08.dining room and living room 31.2m²/ 09.terrace 18m²/ 10.Double bedroom 11.7m²/ 11.bathroom 2 3.4m²/ 12.carport/ 13.kitchen 1.4m²/ 14.dining room and living room 22.6m²/ 15.toilet 1.5m²

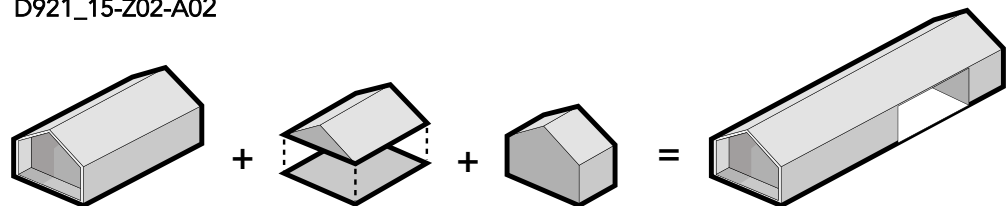
Minimum plot dimensions: 16mx34.5m
(unless otherwise advised by zoning development planning or planning permission for a given plot)

Konfiguracja 7 / dach 15°
Konfiguracja 7 / dach 30°
Konfiguracja 7 / dach 45°

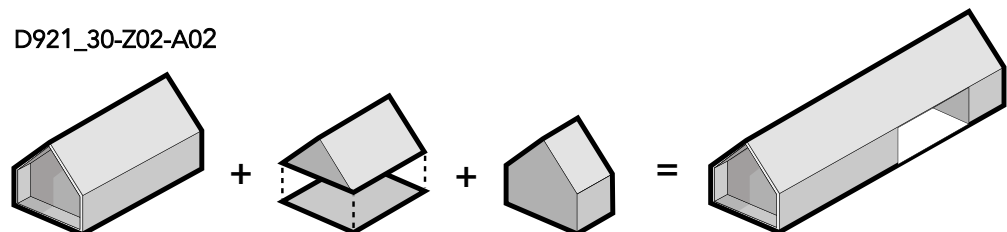
D921_15-Z02-A02
D921_30-Z02-A02
D921_45-Z02-A02



D921_15-Z02-A02



D921_30-Z02-A02



D921_45-Z02-A02

D923_45-Z01-G03



Ground floor surface: 92m²

Attic surface: 33.7 + 9m² = 42.7m²

Total surface: 134.7m²

Garage and storage surface: 26.2m²

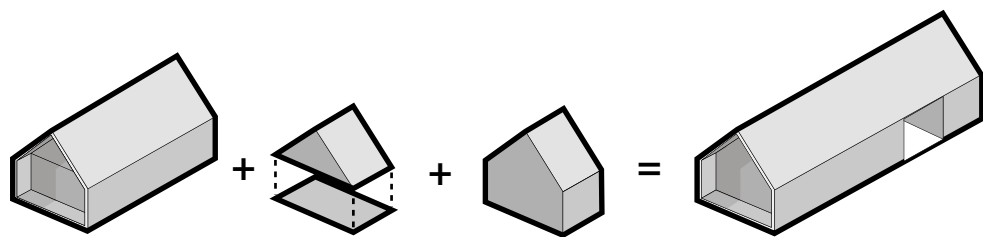
25,23



This is a comfortable house for a multi-generational family. The house is equipped with three bathrooms, laundry-boiler room and cloakroom. On the ground floor there is also a guest room which can serve as a study. The dining area can accommodate up to 12 people. The garage is accessible through the hallway. There is a separate entrance to the garden storage. The walls from the side of the terrace and entrance are finished with wooden panels.

Minimum plot dimensions: 16mx33m (unless otherwise advised by zoning development planning or planning permission for a given plot)

01.hallway 5.2m²/ 02.laundry room/ boiler room 2m²/ 03.bathroom 3.7m²/ 04.corridor 7.1m²/ 05.double bedroom 15.6m²/ 06.kitchen 10.1m²/ 07.Dining room and living room 34m²/ 08.Terrace 18m²/ 10.corridor 5.4m²/ 11.single bedroom 11.8m²/ 12.single bedroom 13m² m²/ 13.bathroom 3.1m²/ 14.double bedroom 13.7m²/ 15.cloakroom 6.5m²/ 15.bathroom 3.7m²/ 16.lazienka 3.7m²/ 17.single bedroom 8.5m²/ 18.garage 23.2m²/ 19.garden storage 3m²



D923_45-Z01-G02

D923_45-G01



Ground floor surface: 92m²

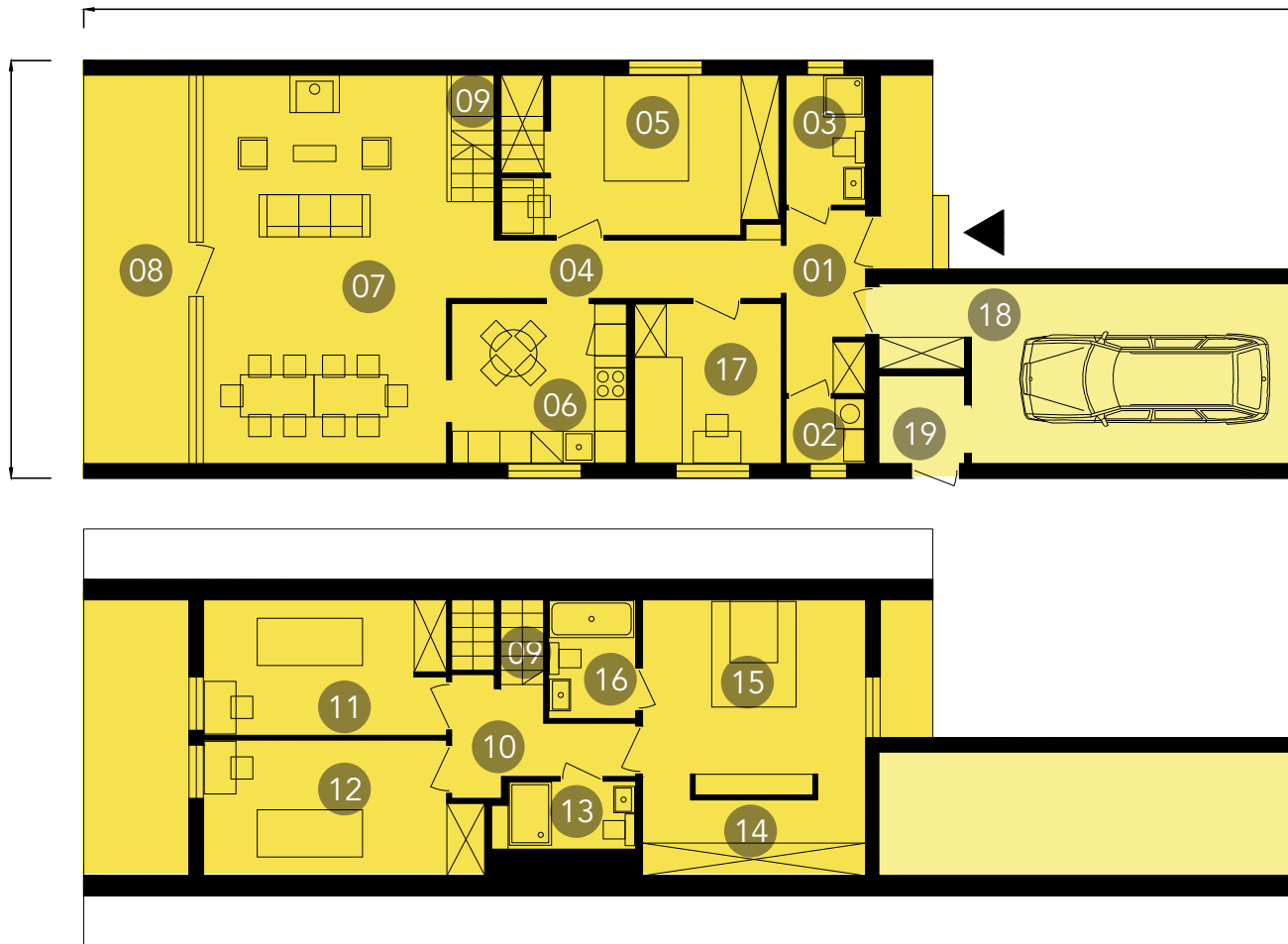
Attic surface: 33.7 + 9m² = 42.7m²

Total surface: 134.7m²

Garage and storage surface: 26.2m²

24,28

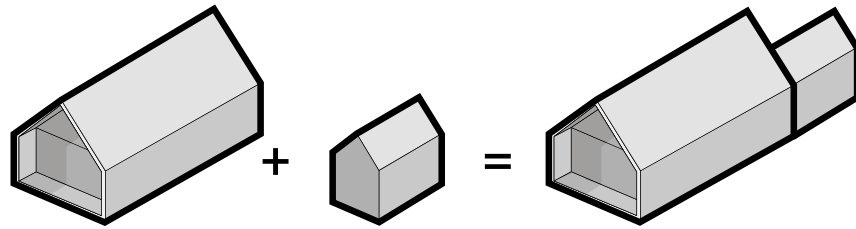
8,04



This is a comfortable house for a multi-generational family. The house is equipped with three bathrooms, laundry-boiler room and cloakroom. On the ground floor there is also a guest room which can serve as a study. The dining area can accommodate up to 12 people. The garage is accessible through the hallway. There is a separate entrance to the garden storage. The walls from the side of the terrace and entrance are finished with wooden panels.

Minimum plot dimensions: 16mx33m (unless otherwise advised by zoning development planning or planning permission for a given plot)

01.hallway 5.2m²/ 02.laundry room/ boiler room 2m²/ 03.bathroom 3.7m²/ 04.corridor 7.1m²/ 05.double bedroom 15.6m²/ 06.kitchen 10.1m²/ 07.Dining room and living room 34m²/ 08.Terrace 18m²/ 10.corridor 5.4m²/ 11.single bedroom 11.8m²/ 12.single bedroom 13m² m²/ 13.bathroom 3.1m²/ 14.double bedroom 13.7m²/ 15.cloakroom 6.5m²/ 15.bathroom 3.7m²/ 16.lazienka 3.7m²/ 17.single bedroom 8.5m²/ 18.garage 23.2m²/ 19.garden storage 3m²

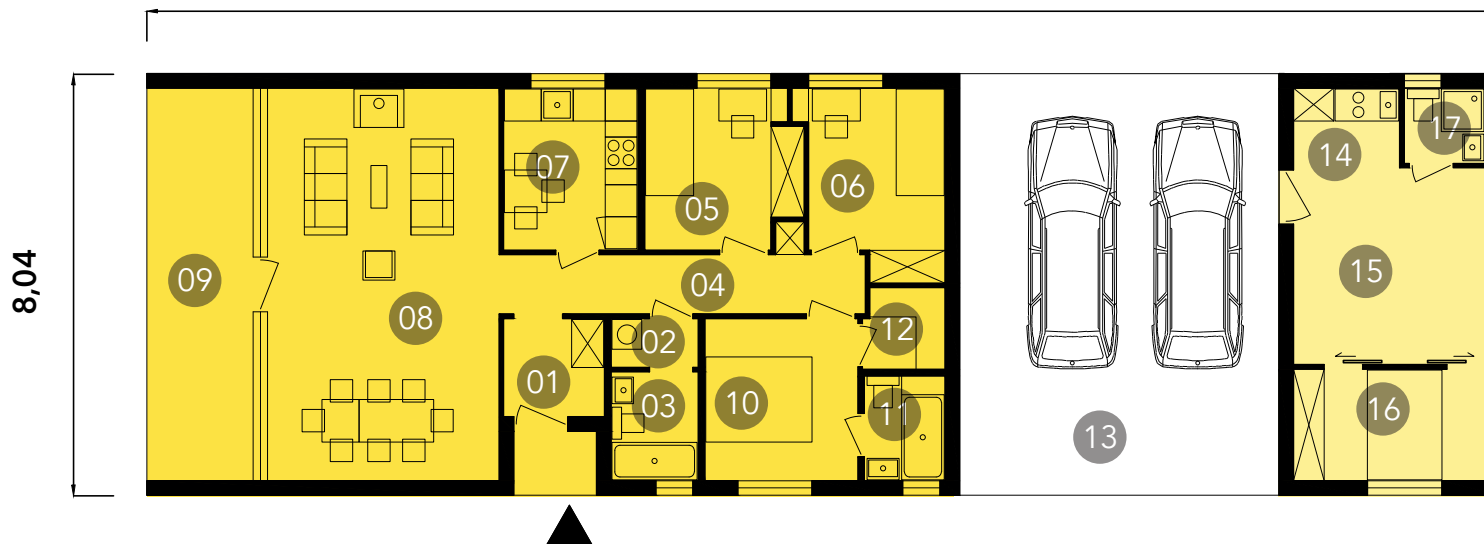


D923_45-G01

D922_15-Z02-A01
D922_30-Z02-A01
D922_45-Z02-A01



28,24



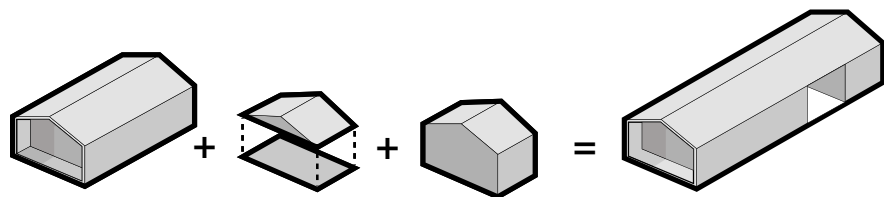
This house provides optimum comfort for its residents. The house is equipped with separate bathroom, laundry and boiler room, bathroom and cloakroom. Expanded lounge and dining room allows to accommodate a large group of people. Perpendicular to the entrance, there is a carport for two cars, under which the entrance to the residential annex for a senior, teenager or guest is located. The roof protects against rain and provides additional storage space for trolleys and bicycles. The facade on the terrace side, and entrance niche are finished with wood panels.

Minimum plot dimensions: 16mx36.5m (unless otherwise advised by zoning development planning or planning permission for a given plot)

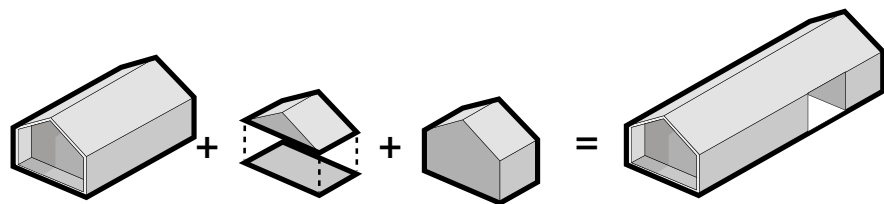
01.hallway 3.5m²/ **02.**loundry room/ boiler room 1.5m²/ **03.**bathroom 3.3m²/ **04.**corridor 7.7m²/ **05.**single bedroom 8.5m²/ **06.**single bedroom 8.9m²/ **07.**Kitchen 7.7m²/ **08.**Dining room and living room 32.1m²/ **09.**Terrace 18m²/ **10.**double bedroom 8.78m²/ **11.**bathroom 3m²/ **12.**cloakroom 2.3m² m²/ **13.**carport 47.5m²/ **14.**kitchen 2 2.2m²/ **15.**dining room and living room 2 13.4m²/ **16.**Double bedroom 7.5m²/ **17.**Bathroom 3 2.1m²

Konfiguracja 4 / dach 15°
Konfiguracja 4 / dach 30°
Konfiguracja 4 / dach 45°

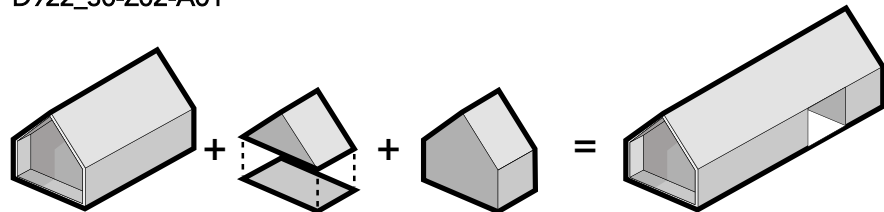
D922_15-Z02-A01
D922_30-Z02-A01
D922_45-Z02-A01



D922_15-Z02-A01



D922_30-Z02-A01



D922_45-Z02-A01

D922_15-G02
D922_30-G02
D922_45-G02



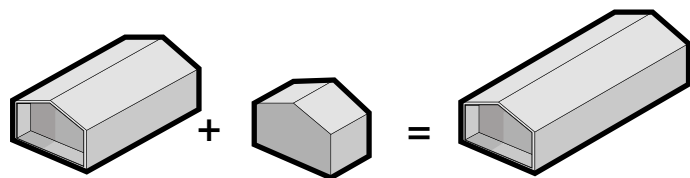
This is a comfortable wooden house which provides optimum comfort for up to 4 residents. It has a possibility to be implemented in 3 versions: STANDARD, ENERGY SAVING OR PASSIVE. Equipped with separate guest bathroom, laundry-boiler room and second bathroom and dressing room. The extended living room and dining room will allow for having over a group of up to 10 people. The garage is attached to the house from the entrance side. There is a garden storage inside the garage. The facade on the terrace side, and entrance niche is finished with wooden panels.

Minimum plot dimensions: 16mx32.5m (unless otherwise advised by zoning development planning or planning permission for a given plot)

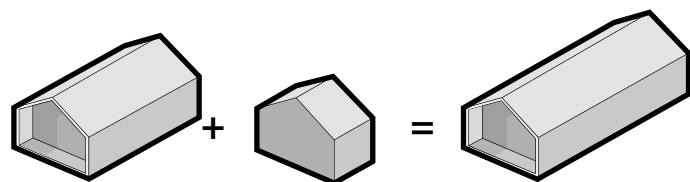
01.hallway 3.5m²/ **02.**laundry room/ boiler room 1.5m²/ **03.**bathroom 3.3m²/ **04.**corridor 7.7m²/ **05.**single bedroom 8.5m²/ **06.**single bedroom 8.9m²/ **07.**Kitchen 7.7m²/ **08.**Dining room and living room 32.1m²/ **09.**Terrace 18m²/ **10.**double bedroom 8.78m²/ **11.**bathroom 3m²/ **12.**cloakroom 2.3m² m²/ **13.**garage 22.8m²/ **14.**garden storage 3m²

Konfiguracja 3 / dach 15°
Konfiguracja 3 / dach 30°
Konfiguracja 3 / dach 45°

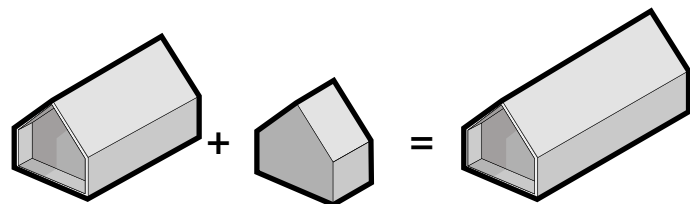
D922_15-G02
D922_30-G02
D922_45-G02



D922_15-G02



D922_30-G02

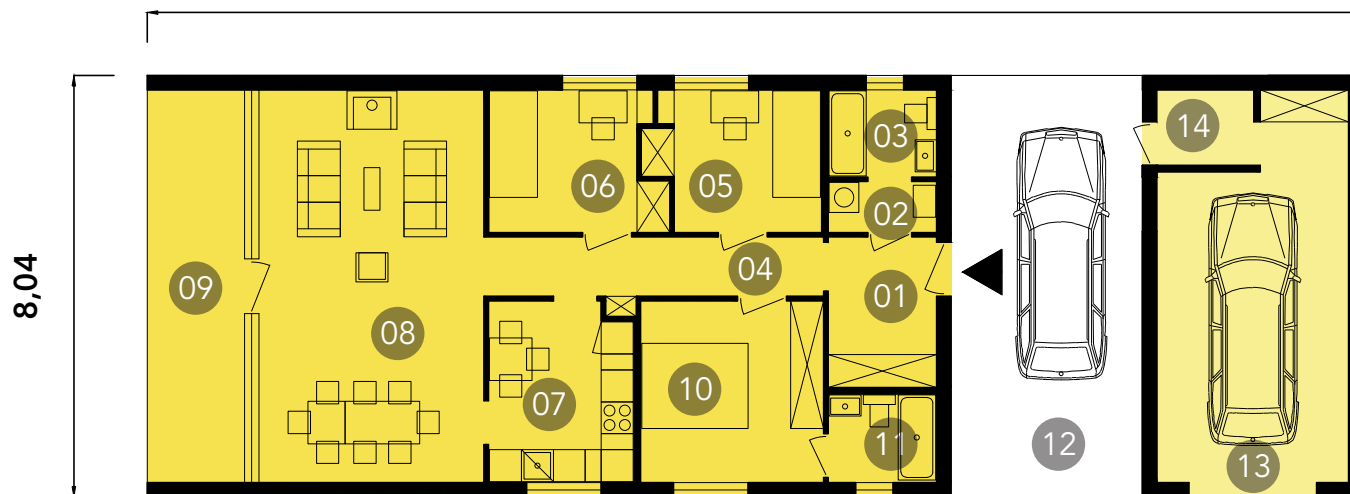


D922_45-G02

D921_15-Z01-G03
D921_30-Z01-G03
D921_45-Z01-G03



25,42



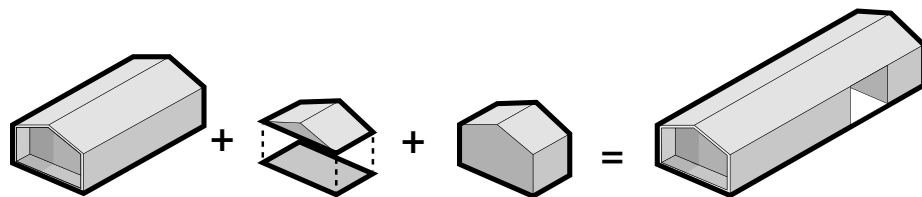
This is a house which provides optimum comfort for 4 residents. This house is equipped with separate bathroom for children and guests, laundry-boiler room and a master bathroom. The expanded living and dining room allow to have over a group of up to 10 people. Perpendicular to the entrance there is a carport, under which the entrance to the house, to the garage and to the garden storage is located. Entering the building and garage through the carport protects you against the rain and gives extra space for storage. the facade from the terrace is finished with wooden panels.

Minimum plot dimensions: 16mx32.5m
(unless otherwise advised by zoning
development planning or planning
permission for a given plot)

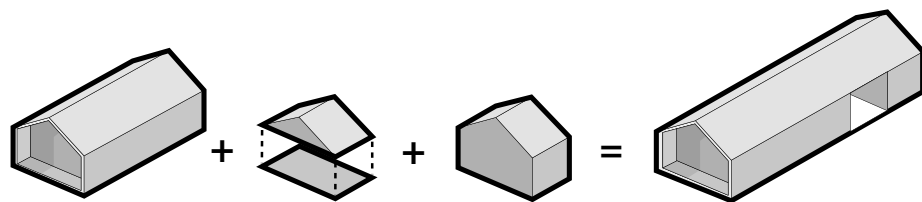
01.hallway 5.7m²/ **02.**laundry room/ boiler room 2m²/ **03.**bathroom 3.3m²/ **04.**corridor 7.1m²/ **05.**single bedroom 8.2m²/ **06.**single bedroom 8.2m²/ **07.**Kitchen 9.1m²/ **08.**Dining room and living room 31.2m²/ **09.**Terrace 18m²/ **10.**double bedroom 11.7m²/ **11.**bathroom 2 3.4m²/ **12.**carport 29m²/ **13.**garage 23.2m²/ **14.**garden storage 2.7m²

Konfiguracja 2 / dach 15°
Konfiguracja 2 / dach 30°
Konfiguracja 2 / dach 45°

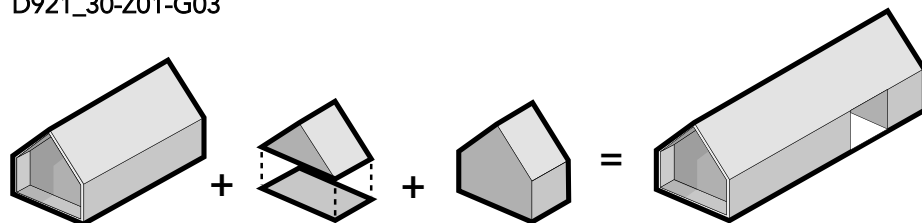
D921_15-Z01-G03
D921_30-Z01-G03
D921_45-Z01-G03



D921_15-Z01-G03

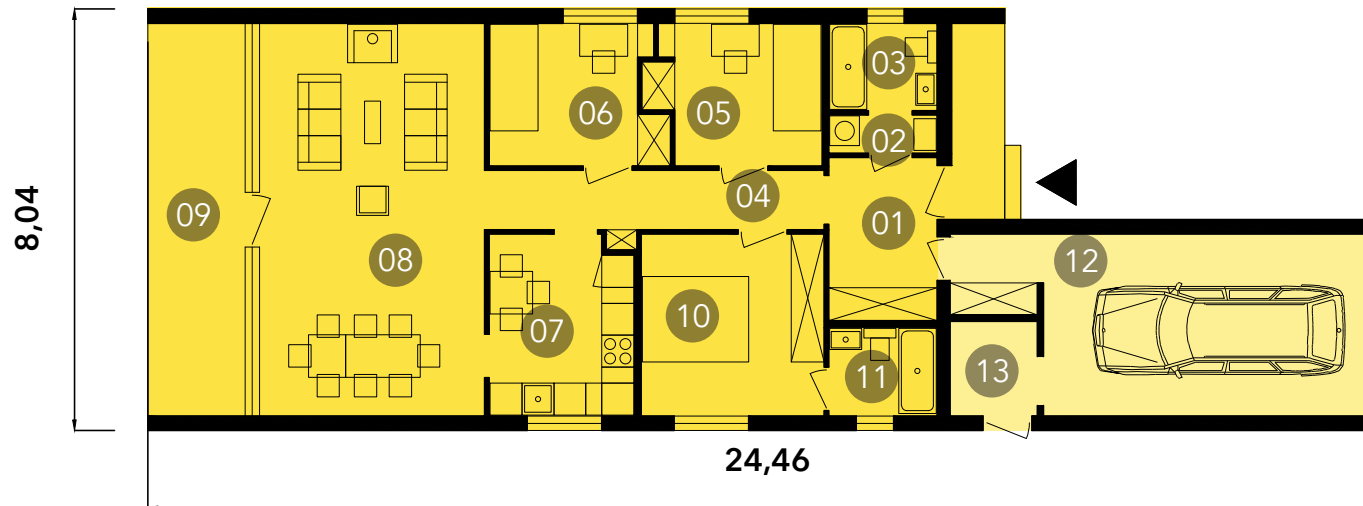


D921_30-Z01-G03



D921_45-Z01-G03

D921_15-G01
D921_30-G01
D921_45-G01



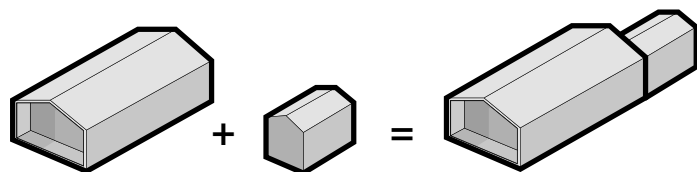
This comfortable house provides an optimum comfort for four residents. This project has a possibility of being implemented in 3 versions: STANDARD, ENERGY SAVING OR PASSIVE. The house is equipped with separate bathroom for children and guests, laundry-boiler room and a master bathroom. The extended living room with dining area allows to have over a group of up to 10 people. The garage is accessible through the hallway. There is a separate entrance to the garden storage. The walls from the entrance and from the terrace are finished with wood panels.

Minimum plot dimensions: 16mx32.5m
(unless otherwise advised by zoning development planning or planning permission for a given plot)

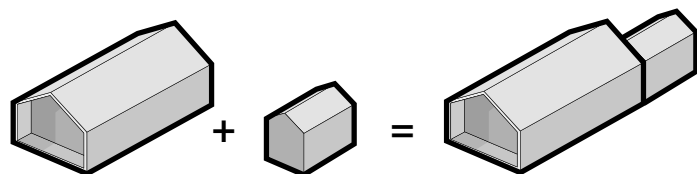
01.hallway 5.7m²/ **02.**loundry room/ boiler room 2m²/ **03.**bathroom 3.3m²/
04.corridor 7.1m²/ **05.**single bedroom 8.2m²/ **06.**single bedroom 8.2m²/
07.Kitchen 9.1m²/ **08.**Dining room and living room 31.2m²/ **09.**Terrace 18m²/
10.double bedroom 11.7m²/ **11.**bathroom 2 3.4m²/ **12.**garage 23.2m²/
13.garden storage 3m²

Konfiguracja 1 / dach 15°
Konfiguracja 1 / dach 30°
Konfiguracja 1 / dach 45°

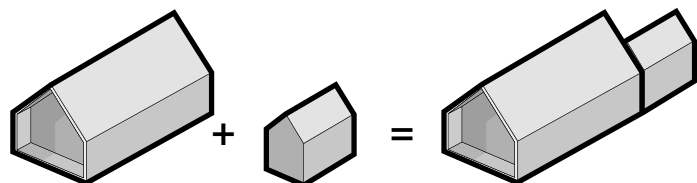
D921_15-G01
D921_30-G01
D921_45-G01




D921_15-G01



D921_30-G01



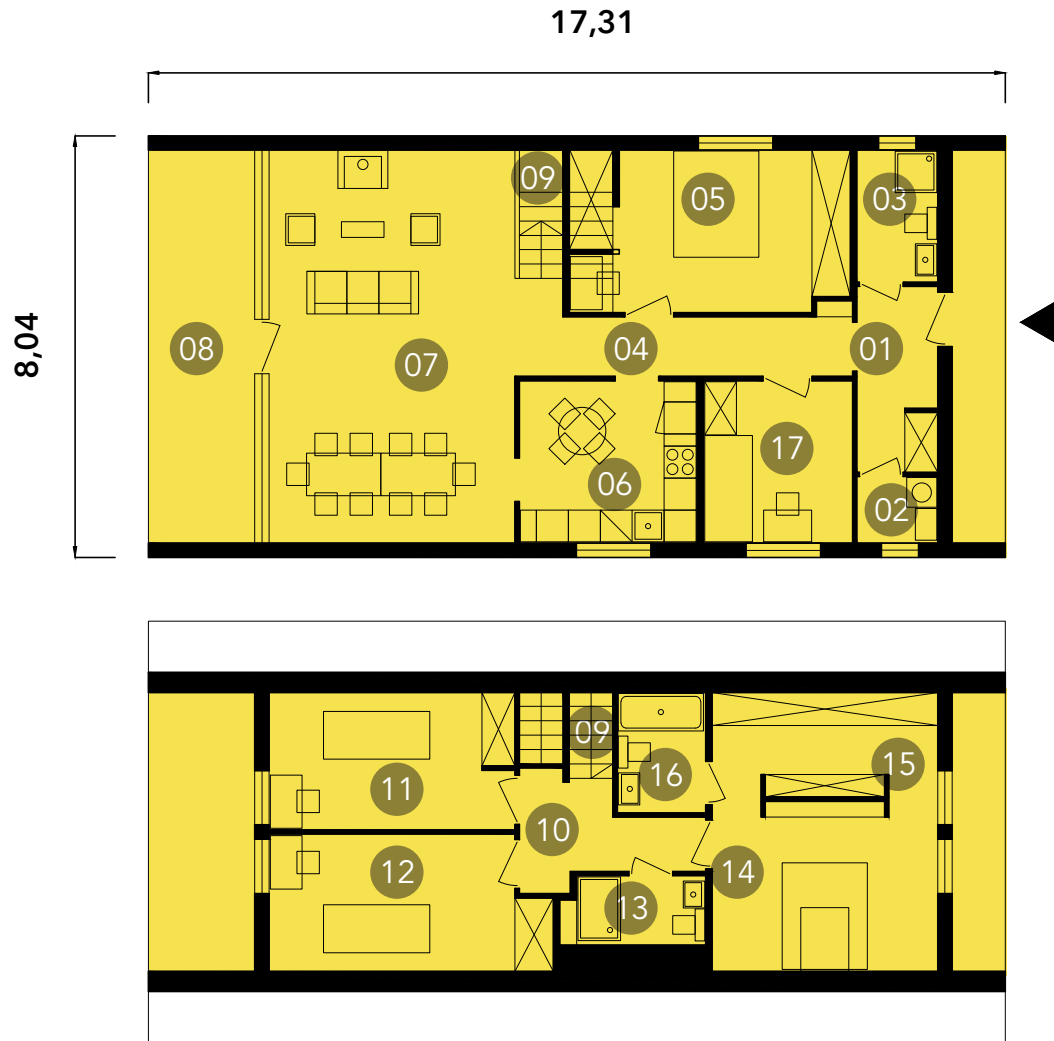
D921_45-G01

D923_45 

Groundfloor surface: 92m²

Attic Surface: 33.7+9m²=42.7m²




Total surface: 134.7m²



This comfortable timber framed house provides optimum comfort for the residents. The house is provided with separate bathroom for the children and guests, laundry-boiler room and a master bathroom. The extended living room with dining area allows for having over a group of up to 10 people. The elevation at the top of the building is finished with wooden decking.

Minimum plot dimensions: 16mx26m (unless otherwise advised by zoning development planning or planning permission for a given plot)

01.hallway 5.2m²/ **02.**loundry room/ boiler room 2m²/ **03.**bathroom 3.7m²/ **04.**corridor 7.1m²/
05.double bedroom 15.6m²/ **06.**kitchen 10.1m²/ **07.**dining room and living room 34m²/
08.terrace 18m²/ **09.**stairs 4.2m²/ **10.**corridor 5.4m²/ **11.**single bedroom 11.8m²/ **12.**Single
bedroom 13m²/ **13.**Bathroom 3.1m²/ **14.**Double bedroom 13.7m²/ **15.**Cloakroom 6.5m²/
16.bathroom 3.7m²/ **17.**single bedroom 8.5m²


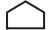

D922_15 
D922_30 
D922_45 

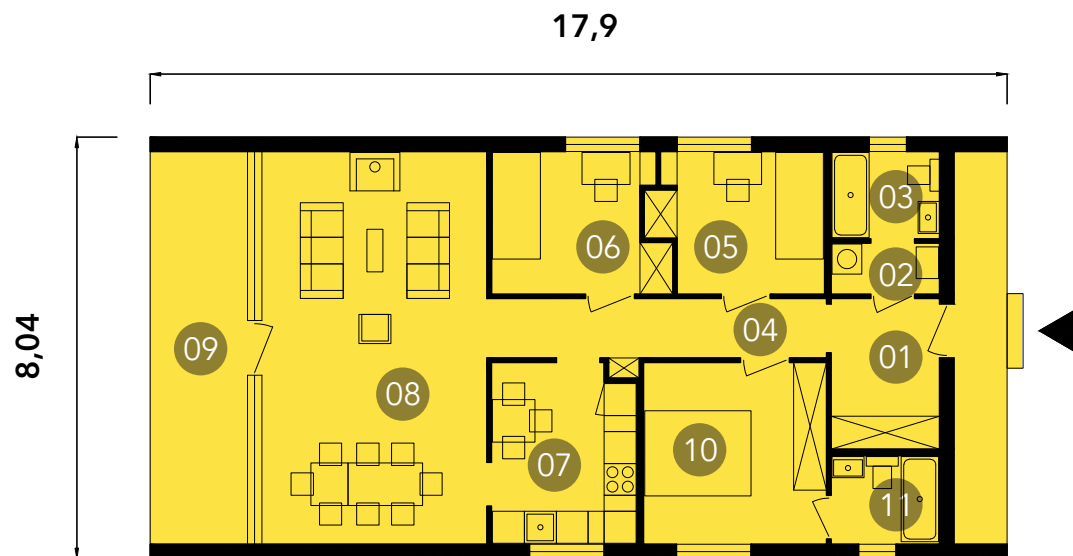


This comfortable and affordable modular house provides optimum comfort for up to four residents. The house is equipped with separate bathroom for children and guests, laundry - boiler room, a master bathroom and a cloakroom. The expanded living and dining room allows for having over up to 10 people. The terrace side and the entrance niche are finished with wood panels.

Minimum plot dimensions:
16mx24.5m (unless otherwise advised
by zoning development planning or
planning permission for a given plot)

01.hallway 3.5m²/ **02.**laundry room/ boiler room 1.5m²/ **03.**bathroom 3.3m²/ **04.**corridor 7.7m²/ **05.**single bedroom 8.5m²/ **06.**single bedroom 8.9m²/ **07.**kitchen 7.7m²/ **08.**dining room and living room 32.1m²/ **09.**terrace 18m²/ **10.**double bedroom 8.78m²/ **11.**second bathroom 2. 3m²/ **12.**Cloakroom 2.3m²

D921_15 
D921_30 
D921_45 



This comfortable all year round wooden house provides optimal comfort for up to four people. It comes in three options: STANDARD, ENERGY SAVING or PASSIVE version. The house provides separate bathroom for children and guests, laundry-boiler room and a master bathroom. The kitchen has space for a small table. The extended living room and dining room allow a comfortable space for a up to 10 people. The entrance and the terrace is finished with wooden panels.

Minimum plot dimensions: 16mx26m
(unless otherwise advised by zoning
development planning or planning
permission for a given plot)

01. hallway 5.7m²/ 02.laundry room/ boiler room 2m²/ 03.bathroom 3.3m²/ 04.corridor 7.1m²/ 05.single bedroom 8.2m²/ 06.single bedroom 8.2m²/ 07.kitchen 9.1m²/ 08.dining room and living room 31.2m²/ 09.terrace 18m²/ 10.double bedroom 11.7m²/ 11.second bathroom 3.4m²